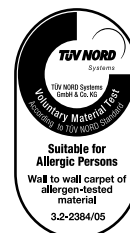


# TERRA AB

## ESSENTIAL COLLECTION

HIGH  
PERFORMANCE  
COLLECTION

CONSTRUCTION STRUCTURE STRUKTUR STRUCTUUR	ituft 1/12" loop ituft 1/12" bouclé ituft 1/12" Schlinge ituft 1/12" lussenpool	CASTOR CHAIR SUITABILITY CHAISE À ROULETTES STUHLROLLENEIGNUNG ROLSTOELGESCHIKTHEID	EN 985 A: intensive use
PILE MATERIAL COMPOSITION DU VELOURS POLMATERIAL POOLMATERIAAL	100% PA 6 solution dyed	STAIR SUITABILITY ESCALIERS TREPPENEIGNUNG TRAPPENGESCHIKTHEID	EN 1963 A: intensive use
PRIMARY BACKING SUPPORT TRÄGERMATERIAL TUFTDOEK	Non woven PES Non tissé PES Vlies, PES Vilt, PES	PERMANENTLY ANTISTATIC ANTISTATIQUE PERMANENT PERMANENT ANTISTATISCH PERMANENT ANTISTATISCH	ISO 6356 < 2 kV
SECONDARY BACKING DOSSIER RÜCKEN TAPIJTRUG	Action back	IMPACT NOISE RATING ISOLATION PHONIQUE TRITTSCHALLVERBESSERUNG GELUIDSISOLATIE	ISO 140-8 25dB ΔLw
PILE WEIGHT POIDS DU VELOURS POLEINSATZGEWICHT POOLGEWICHT	± 840 gr/m <sup>2</sup>	SOUND ABSORPTION ABSORPTION PHONIQUE SCHALLABSORPTIONSGRAD GELUIDSABSORPTIE	ISO 354 0.20 αw
TOTAL WEIGHT POIDS TOTAL GESAMTGEWICHT TOTAAL GEWICHT	± 2.400 gr/m <sup>2</sup>	THERMAL RESISTANCE RÉSISTANCE THERMIQUE WÄRMEDURCHLASSWIDERSTAND WARMTEDOORLAATWEERSTAND	ISO 8302 0.10 m <sup>2</sup> K/W
PILE HEIGHT EPAISSEUR DU VELOURS POLHÖHE POOLHOOGTE	± 4,4 mm	FASTNESS TO LIGHT SOLIDITÉ A LA LUMIÈRE LICHTECHTHEIT LICHTECHTHEID	ISO 105-B02 ≥ 7
TOTAL HEIGHT EPAISSEUR TOTALE GESAMTHÖHE TOTALE HOOGTE	± 7,5 mm	COLOUR FASTNESS TO WATER SOLIDITÉ À L'EAU WASSERECHTHEIT WATERECHTHEID	EN ISO 105-E01 ≥ 4-5
TUFT DENSITY NOMBRE DE POINTS NOPPENZAHL AANTAL PUNTEN	± 259.000/m <sup>2</sup>	RUBBING FASTNESS SOLIDITÉ AU FROTTEMENT REIBECHTHEIT WRIJFECHTHEID	EN ISO 105-X12 ≥ 4
PILE DENSITY DENSITÉ DU VELOURS POLROHDICHTHEIT POOLDICHTHEID	± 0,129g/cm <sup>3</sup>	FIRE RESISTANCE COMPORTEMENT AU FEU BRENNVERHALTEN BRANDGEDRAG	EN 13501-1 Cfl-s1 if glued
CLASSIFICATION CLASSEMENT KLASSIFIKATION CLASSIFICATIE	EN 1307 32 - LC2	WIDTH LARGEUR BREITE BREEDTE	EN ISO 3018 ± 400 cm
DESIGN REPEAT (CM) RACCORD (CM) RAPPORT (CM) DESSINRAPPORT (CM)	± 200 (W) x ± 183 (H) repeatless installation possible		
PRODIS / GUT	19DAA0F3		



EN 14041 <b>CE</b>
25
ITC CO BV Kanegemstraat 15 - BE 8700 Tielt
DOP: 1011#IE0ACV Textile Floor Covering EN1307 Notified Body 2401
my.itc-carpets.com

itc®



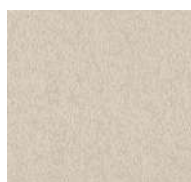
# TERRA

## ESSENTIAL COLLECTION

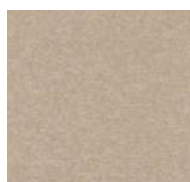
RAW & NATURAL  
EARTH INSPIRED COLORS



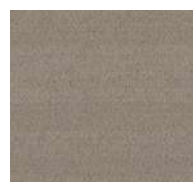
94 / SDN



32 / SDN



38 / SDN



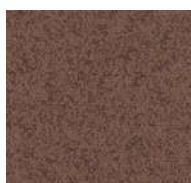
39 / SDN



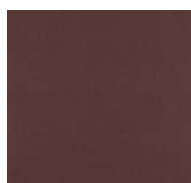
95 / SDN



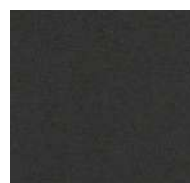
97 / SDN



64 / SDN



18 / SDN



98 / SDN



ITC CO BV - Kanegemstraat 15 - B-8700 Tielt - Belgium - [hello@itc-carpets.com](mailto:hello@itc-carpets.com) - [itc-carpets.com](http://itc-carpets.com)