

# EVOLVE

## LONGPLAY COLLECTION

HIGH  
PERFORMANCE  
COLLECTION

|  |   |  |                                     |
|--|---|--|-------------------------------------|
| CONSTRUCTION<br>STRUCTURE<br>STRUKTUR<br>STRUCTUUR                       | Tufted 5/64" cut pile<br>Tufté 5/64" cut pile<br>Getuftet 5/64" cut pile<br>Getuft 5/64" cut pile | CASTOR CHAIR SUITABILITY<br>CHAISE À ROULETTES<br>STUHLROLLENEIGNUNG<br>ROLSTOELGESCHIKTHEID         | EN 985<br>A: intensive use          |
| PILE MATERIAL<br>COMPOSITION DU VELOURS<br>POLMATERIAAL<br>POOLMATERIAAL | 100% PA 6   | STAIR SUITABILITY<br>ESCALIERS<br>TREPPENEIGNUNG<br>TRAPPENGESCHIKTHEID                              | EN 1963<br>A: intensive use         |
| PRIMARY BACKING<br>SUPPORT<br>TRÄGERMATERIAAL<br>TUFTDOEK                | Woven PP<br>PP tissé<br>PP Bändchen<br>Geweven PP   | PERMANENTLY ANTISTATIC<br>ANTISTATIQUE PERMANENT<br>PERMANENT ANTISTATISCH<br>PERMANENT ANTISTATISCH | ISO 6356<br>< 2 kV                  |
| SECONDARY BACKING<br>DOSSIER<br>RÜCKEN<br>TAPIJTRUG                      | Action back   | IMPACT NOISE RATING<br>ISOLATION PHONIQUE<br>TRITTSCHALLVERBESSERUNG<br>GELUIDSISOLATIE              | ISO 140-8<br>26 dB ΔLw              |
| PILE WEIGHT<br>POIDS DU VELOURS<br>POLEINSATZGEWICHT<br>POOLGEWICHT      | ± 1.200 gr/m <sup>2</sup>   | SOUND ABSORPTION<br>ABSORPTION PHONIQUE<br>SCHALLABSORPTIONSGRAD<br>GELUIDSABSORPTIE                 | ISO 354<br>0,15 aw                  |
| TOTAL WEIGHT<br>POIDS TOTAL<br>GESAMTGEWICHT<br>TOTAAL GEWICHT           | ± 2.027 gr/m <sup>2</sup>   | THERMAL RESISTANCE<br>RÉSISTANCE THERMIQUE<br>WÄRMEDURCHLASSWIDERSTAND<br>WARMTEDOORLAATWEERSTAND    | ISO 8302<br>0,08 m <sup>2</sup> K/W |
| PILE HEIGHT<br>EPAISSEUR DU VELOURS<br>POLHÖHE<br>POOLHOOGTE             | ± 5 mm  | FASTNESS TO LIGHT<br>SOLIDITÉ A LA LUMIÈRE<br>LICHTECHTHEIT<br>LICHTECHTHEID                         | ISO 105-B02<br>≥ 5-6                |
| TOTAL HEIGHT<br>EPAISSEUR TOTALE<br>GESAMTHÖHE<br>TOTALE HOOGTE          | ± 7,5 mm  | COLOUR FASTNESS TO WATER<br>SOLIDITÉ À L'EAU<br>WASSERECHEIT<br>WATERECHEID                          | EN ISO 105-E01<br>≥ 4-5             |
| TUFT DENSITY<br>NOMBRE DE POINTS<br>NOPPENZAHL<br>AANTAL PUNTEN          | ± 278.400/m <sup>2</sup>  | RUBBING FASTNESS<br>SOLIDITÉ AU FROTTEMENT<br>REIBECHTHEIT<br>WRIJFECHTHEID                          | EN ISO 105-X12<br>≥ 4               |
| PILE DENSITY<br>DENSITÉ DU VELOURS<br>POLROHDICHTHEIT<br>POOLDICHTHEID   | ± 0,180g/cm <sup>3</sup>  | FIRE RESISTANCE<br>COMPORTEMENT AU FEU<br>BRENNVERHALTEN<br>BRANDGEDRAG                              | EN 13501-1<br>Cfl-s1 if glued       |
| CLASSIFICATION<br>CLASSEMENT<br>KLASSIFIKATION<br>CLASSIFICATIE          | EN 1307<br>32 - LC4   | WIDTH<br>LARGEUR<br>BREITE<br>BREEDTE  | EN ISO 3018<br>± 400 + 500 cm       |
| PRODIS / GUT   | AFBF95B0  |  |                                     |

itc®

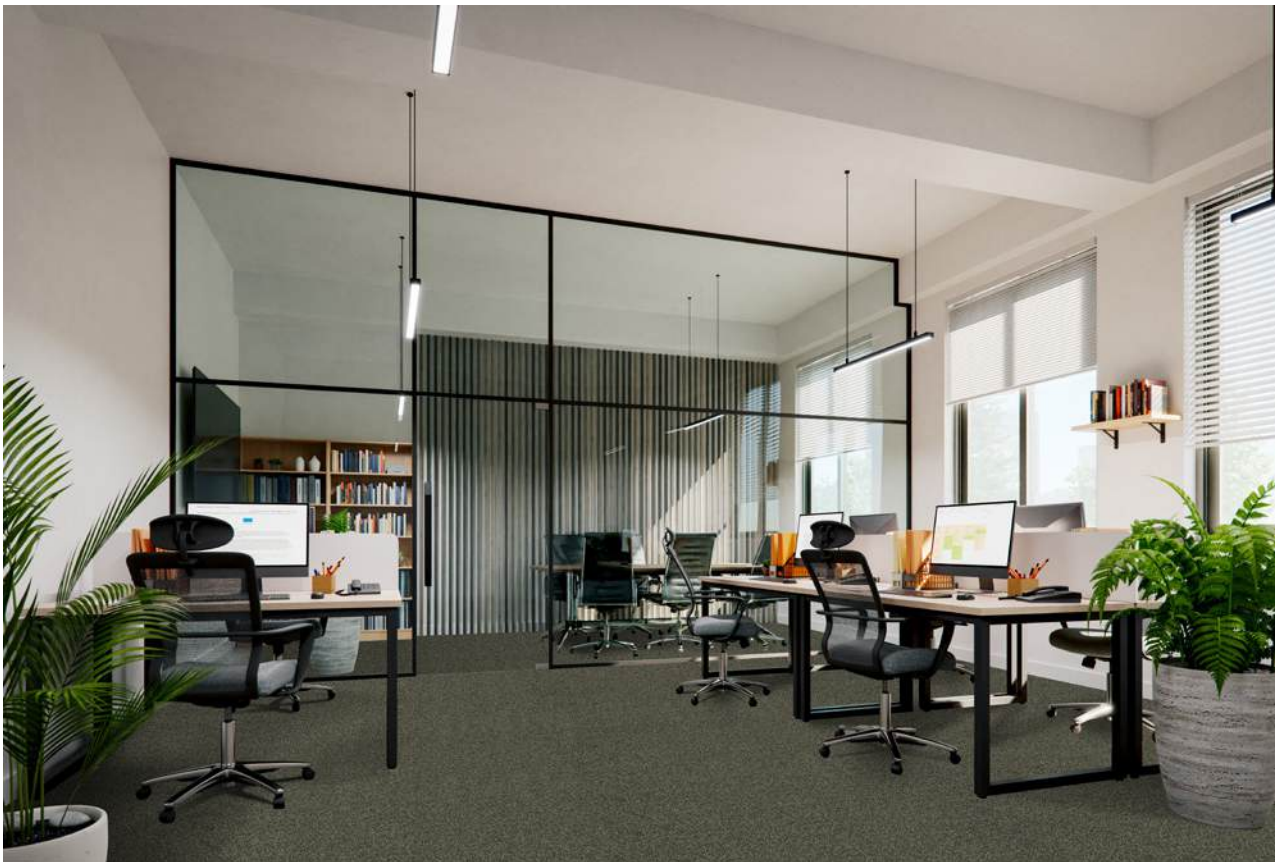


|   |
|---|
| EN 14041<br><b>CE</b>   |
| 15  |
| ITC CO BV<br>Kanegemstraat 15 - BE 8700 Tielt                           |
| DOP: 1011#IE0ACV<br>Textile Floor Covering EN1307<br>Notified Body 2401 |
|   |
| my.itc-carpets.com  |

# EVOLVE

## LONGPLAY COLLECTION

COLOR DIVERSITY  
SOFT DUAL-TONE



94



49



43



38



36



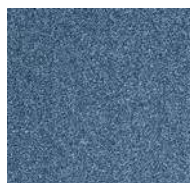
40



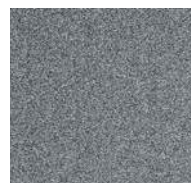
66



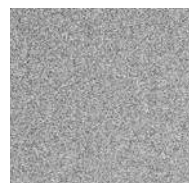
15



77



75



92



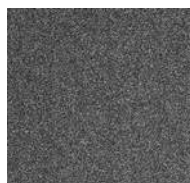
93



99



97



98



39



28



ITC CO BV - Kanegemstraat 15 - B-8700 Tielt - Belgium - hello@itc-carpets.com - itc-carpets.com